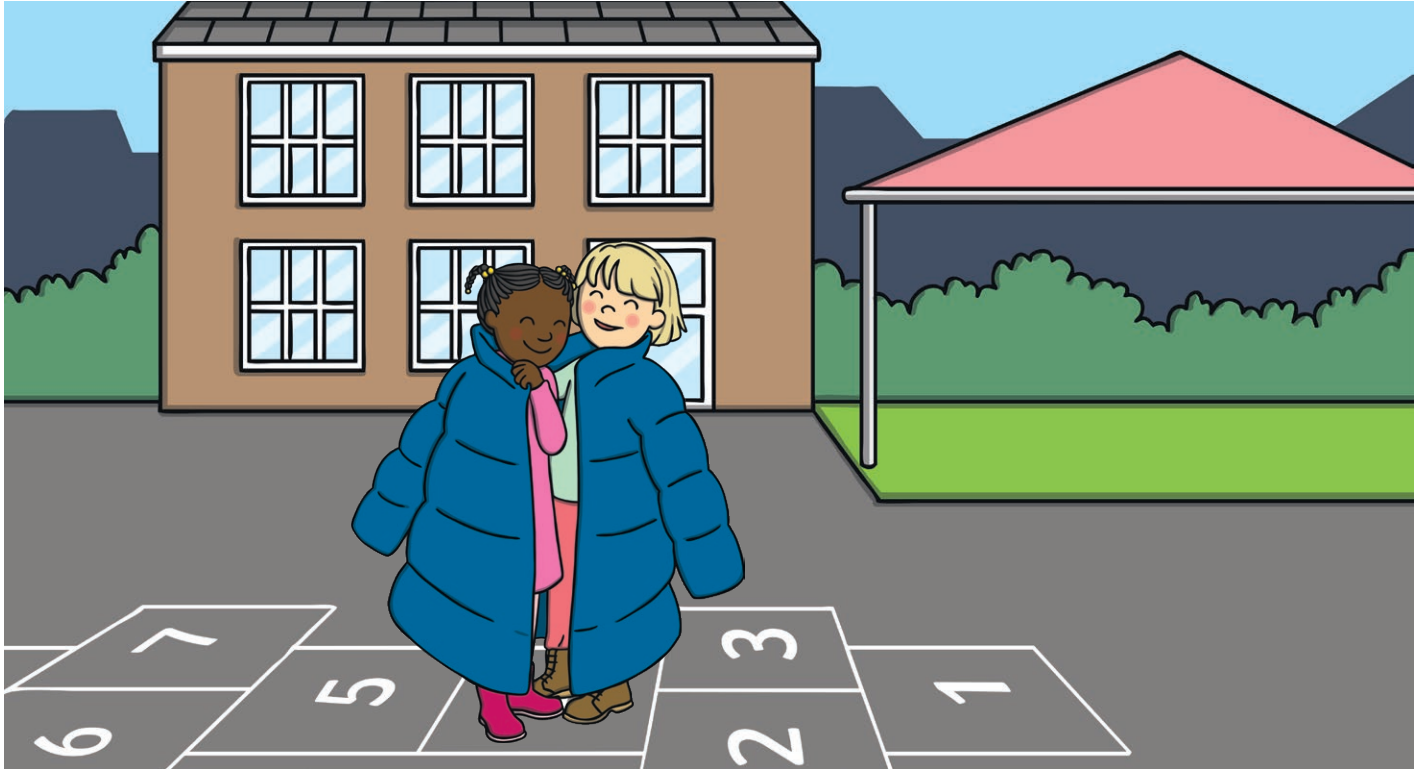


Sharing With a Friend

Jill wakes up to get ready for school. Jill looks in her closet and pulls out her coat. Jill tries to put the coat on. "My coat is too small!" Jill shouts. Mom says, "You can wear mine." Jill smiles and says, "I have the best mom." At school, the class goes outside to play. Jill is glad she has a warm coat. Her friend Kate does not have a coat. Kate looks cold. "Here Kate, we can share my big coat," Jill says. Kate smiles and says, "I have the best friend."



1. Who is the main character in this story?
 - Jill
 - Kate
 - Mom
2. What time of year is this story taking place?
 - summer
 - winter
 - spring
3. What is Jill's problem in this story?
 - Jill's coat is too small.
 - Mom's coat is too small.
 - Kate is a mean friend.

Answers

1. Who is the main character in this story?
 - Jill**
 - Kate
 - Mom
2. What time of year is this story taking place?
 - summer
 - winter**
 - spring
3. What is Jill's problem in this story?
 - Jill's coat is too small.**
 - Mom's coat is too small.
 - Kate is a mean friend.